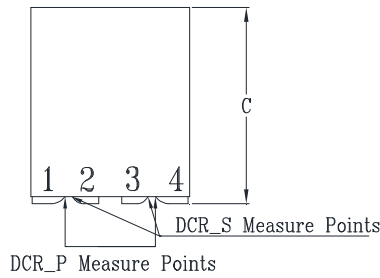
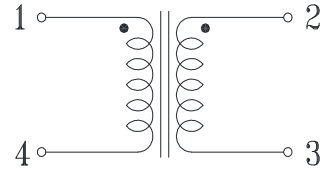
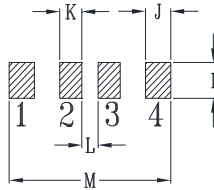
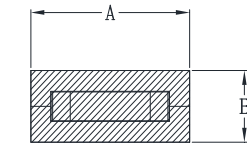


CYNTEC CO., LTD.

乾坤科技股份有限公司

TLM125514F Series

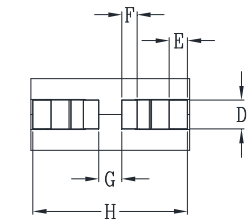
Mechanical Dimensions & Schematic



Suggested PWB Layout

Schematic

UNIT : mm
 A = 12.0 MAX
 B = 5.5 MAX
 C = 14.0 MAX
 D = 2.0
 E = 1.35
 F = 1.13
 G = 1.7
 H = 11.4
 I = 2.5
 J = 1.85
 K = 1.63
 L = 1.2
 M = 11.9



Electrical Characteristics @ 25°C, 100kHz, 1V

Delta P/N	L (nH) ± 15%	Li (nH) MIN	DCR (mΩ) ± 10%		Isat ¹ (A)		Ir ² (A)	
			1-4	2-3	25°C	100°C	1-4	2-3
TLM125514F-900	90	63	0.24	0.42	177	150	55	42
TLM125514F-101	100	70			158	134		
TLM125514F-121	120	84			130	110		
TLM125514F-151	150	105			102	87		
TLM125514F-171	170	119			88	75		

1. Isat is the DC current which causes the inductance drop to Li.
2. Ir is the DC current which causes the surface temperature of the part increase approximately 40 °C.
3. Operating temperature: -40°C to 125°C (Self-temperature rise included).